



# Performance

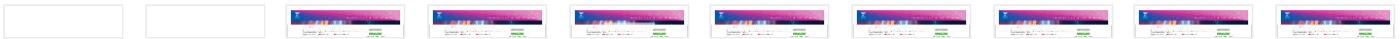
## Metrics



● First Contentful Paint	0.5 s	● Time to Interactive	1.6 s
● Speed Index	1.1 s	● Total Blocking Time	10 ms
● Largest Contentful Paint	0.9 s	● Cumulative Layout Shift	0

Values are estimated and may vary. The [performance score is calculated](#) directly from these metrics. [See calculator.](#)

[View Original Trace](#)



**Opportunities** — These suggestions can help your page load faster. They don't [directly affect](#) the Performance score.

Opportunity Estimated Savings

▲ **Serve images in next-gen formats** 0.8 s ^

Image formats like JPEG 2000, JPEG XR, and WebP often provide better compression than PNG or JPEG, which means faster downloads and less data consumption. [Learn more.](#)

Show 3rd-party resources (0)

URL	Resource Size	Potential Savings
 ...slider-1920x700/karriere.jpg?h=... (w eb-jenoptik-cd-uat-sc930.sitecore.onw ebhosting.net)	487.8 KiB	434.4 KiB
 ...slider-1920x700/bio-world....jpg?h=... (w eb-jenoptik-cd-uat-sc930.sitecore.onw ebhosting.net)	430.1 KiB	302.2 KiB
 ...slider-1920x700/marken-slider.jpg?h=... (w eb-jenoptik-cd-uat-sc930.sitecore.onw ebhosting.net)	266.8 KiB	199.5 KiB
 ...press/fahnen-more-light.jpg?bc=... (w eb-jenoptik-cd-uat-sc930.sitecore.onw ebhosting.net)	70.5 KiB	34.9 KiB
 ...4x3/f-theta-l....jpg?bc=... (w eb-jenoptik-cd-uat-sc930.sitecore.onw ebhosting.net)	22.7 KiB	13.1 KiB

■ **Efficiently encode images** 0.44 s ^

Optimized images load faster and consume less cellular data. [Learn more.](#)

Show 3rd-party resources (0)

URL	Resource Size	Potential Savings
 ...slider-1920x700/karriere.jpg?h=... (w eb-jenoptik-cd-uat-sc930.sitecore.onw ebhosting.net)	487.8 KiB	331.3 KiB
 ...slider-1920x700/bio-world...jpg?h=... (w eb-jenoptik-cd-uat-sc930.sitecore.onw ebhosting.net)	430.1 KiB	157.6 KiB
 ...slider-1920x700/marken-slider.jpg?h=... (w eb-jenoptik-cd-uat-sc930.sitecore.onw ebhosting.net)	266.8 KiB	91 KiB
 ...press/fahnen-more-light.jpg?bc=... (w eb-jenoptik-cd-uat-sc930.sitecore.onw ebhosting.net)	70.5 KiB	22.2 KiB
 ...4x3/f-theta-l...jpg?bc=... (w eb-jenoptik-cd-uat-sc930.sitecore.onw ebhosting.net)	22.7 KiB	5.8 KiB

#### ■ Eliminate render-blocking resources

0.14 s ^

Resources are blocking the first paint of your page. Consider delivering critical JS/CSS inline and deferring all non-critical JS/styles. [Learn more.](#)

Show 3rd-party resources (0)

URL	Transfer Size	Potential Savings
...css/FA788085B....css (w eb-jenoptik-cd-uat-sc930.sitecore.onw ebhosting.net)	106 KiB	140 ms

**Diagnostics** — More information about the performance of your application. These numbers don't [directly affect](#) the Performance score.

#### ▲ Does not use passive listeners to improve scrolling performance

^

Consider marking your touch and wheel event listeners as `passive` to improve your page's scroll performance. [Learn more.](#)

Show 3rd-party resources (0)








URL	Location
...js/jeno-html.js?36D12A234FA1F3FA7F8192C38F9E07F8 (w eb-jenoptik-cd-uat-sc930.sitecore.onw ebhosting.net)	line: 147

#### ▲ Image elements do not have explicit `width` and `height`

^

Set an explicit width and height on image elements to reduce layout shifts and improve CLS. [Learn more](#)

Show 3rd-party resources (0)

URL	Failing Elements
	img
	img
	img
	img
	img
	img
	img

▲ Serve static assets with an efficient cache policy — 15 resources found ^

A long cache lifetime can speed up repeat visits to your page. [Learn more.](#)

Show 3rd-party resources (6)

URL	Cache TTL	Transfer Size
...flags/en.gif (cdn.consentmanager.mgr.consensu.org)	None	1 KiB
...recall/recall_build.svg (cdn.consentmanager.mgr.consensu.org)	None	0 KiB
...customdata/bV8xLndfO...js (cdn.consentmanager.mgr.consensu.org)	30 m	3 KiB
/delivery/cmp_de.min.js (cdn.consentmanager.mgr.consensu.org)	1 h	101 KiB
...lang/langpurpose_en.min.js (cdn.consentmanager.mgr.consensu.org)	1 h	6 KiB
/delivery/cmplogo.svg (cdn.consentmanager.mgr.consensu.org)	1 h	2 KiB
...js/jeno-html.js?36D12A234FA1F3FA7F8192C38F9E07F8 (w eb-jenoptik-cd-uat-sc930.sitecore.onw ebhosting.net)	7 d	270 KiB
...css/FA788085B...css (w eb-jenoptik-cd-uat-sc930.sitecore.onw ebhosting.net)	7 d	106 KiB
...font/FrutigerN....woff2 (w eb-jenoptik-cd-uat-sc930.sitecore.onw ebhosting.net)	7 d	72 KiB
...font/FrutigerN....woff2 (w eb-jenoptik-cd-uat-sc930.sitecore.onw ebhosting.net)	7 d	63 KiB
...libs/19B2CDD88...js (w eb-jenoptik-cd-uat-sc930.sitecore.onw ebhosting.net)	7 d	14 KiB
...deferred/nav.js?36D12A234FA1F3FA7F8192C38F9E07F8 (w eb-jenoptik-cd-uat-sc930.sitecore.onw ebhosting.net)	7 d	6 KiB
...deferred/anchor-link.js?36D12A234FA1F3FA7F8192C38F9E07F8 (w eb-jenoptik-cd-uat-sc930.sitecore.onw ebhosting.net)	7 d	3 KiB

URL	Cache TTL	Transfer Size
...libs/hoverintent.js?36D12A234FA1F3FA7F8192C38F9E07F8 (w eb-jenoptik-cd-uat-sc930.sitecore.onw ebhosting.net)	7 d	3 KiB
...libs/jquery.anchorlink.js?36D12A234FA1F3FA7F8192C38F9E07F8 (w eb-jenoptik-cd-uat-sc930.sitecore.onw ebhosting.net)	7 d	3 KiB

#### ■ Avoid an excessive DOM size — 1,309 elements

A large DOM will increase memory usage, cause longer [style calculations](#), and produce costly [layout reflows](#). [Learn more](#).

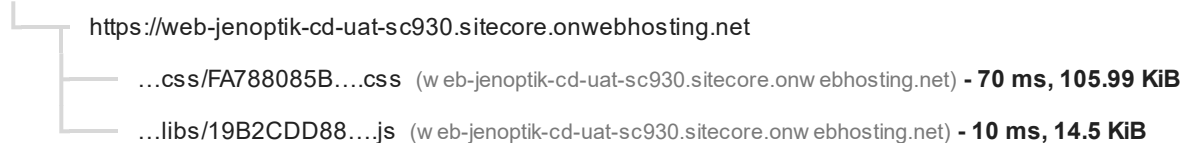
Statistic	Element	Value
Total DOM Elements		NaN
Maximum DOM Depth	<use xlink:href="#ico-arrow-right">	16
Maximum Child Elements	<svg xmlns="http://www.w3.org/2000/svg">	71

#### ● Avoid chaining critical requests — 2 chains found

The Critical Request Chains below show you what resources are loaded with a high priority. Consider reducing the length of chains, reducing the download size of resources, or deferring the download of unnecessary resources to improve page load. [Learn more](#).

Maximum critical path latency: **410 ms**

##### Initial Navigation



#### ● Keep request counts low and transfer sizes small — 25 requests • 2,040 KiB

To set budgets for the quantity and size of page resources, add a budget.json file. [Learn more](#).

Resource Type	Requests	Transfer Size
Total	25	2,039.7 KiB
Image	11	1,335.9 KiB
Script	10	418.7 KiB
Font	2	135 KiB
Stylesheet	1	106 KiB
Document	1	44.1 KiB
Media	0	0 KiB
Other	0	0 KiB

Resource Type	Requests	Transfer Size
Third-party	9	122.5 KiB

● Largest Contentful Paint element — 1 element found ^

This is the largest contentful element painted within the viewport. [Learn More](#)

Element

[li.slide-EBA152F05E9A42F3B43E58F87026651F.slider-content-animation.animate-from-top](#)

● Avoid long main-thread tasks — 3 long tasks found ^

Lists the longest tasks on the main thread, useful for identifying worst contributors to input delay. [Learn more](#)

Show 3rd-party resources (0)

URL	Start Time	Duration
...js/jeno-html.js?36D12A234FA1F3FA7F8192C38F9E07F8 (w eb-jenoptik-cd-uat-sc930.sitecore.onw ebhosting.net)	1,789 ms	69 ms
https://web-jenoptik-cd-uat-sc930.sitecore.onwebhosting.net	346 ms	51 ms
...js/jeno-html.js?36D12A234FA1F3FA7F8192C38F9E07F8 (w eb-jenoptik-cd-uat-sc930.sitecore.onw ebhosting.net)	1,722 ms	51 ms

● Avoid non-composited animations — 19 animated elements found ^

Animations which are not composited can be janky and increase CLS. [Learn more](#)

Element	Name
<a href="#">span.btn.btn-default</a> Transform-related property depends on box size	
<a href="#">span.btn.btn-default</a> Transform-related property depends on box size	
<a href="#">span.btn.btn-default</a> Transform-related property depends on box size	moveInHeadline
<a href="#">span.btn.btn-default</a> Target has another animation which is incompatible	moveInHeadline
<a href="#">span.btn.btn-default</a> Transform-related property depends on box size	
<a href="#">span.btn.btn-default</a> Transform-related property depends on box size	
<a href="#">span.btn.btn-default</a> Transform-related property depends on box size	
<a href="#">span.btn.btn-default</a> Transform-related property depends on box size	

Element	Name
<code>span.btn.btn-default</code>	
Transform-related property depends on box size	
<code>figure.image.lazy</code>	
Transform-related property depends on box size	
<code>figure.image.lazy</code>	
Transform-related property depends on box size	
<code>figure.image.lazy</code>	
Transform-related property depends on box size	
<code>figure.image.lazy</code>	
Transform-related property depends on box size	
<code>figure.image.lazy</code>	
Transform-related property depends on box size	
<code>figure.image.lazy</code>	
Transform-related property depends on box size	
<code>figure.image.lazy</code>	
Transform-related property depends on box size	
<code>a.alignment-content</code>	
Transform-related property depends on box size	moveInTop
<code>h2</code>	
Transform-related property depends on box size	moveInHeadline
<code>span.text-accent</code>	
Transform-related property depends on box size	moveInHeadline
<code>div.slider-content-wrapper</code>	
Transform-related property depends on box size	moveInHeadline
<code>::before</code>	
<code>&lt;::before&gt;</code>	
Transform-related property depends on box size	

## Passed audits (23) ^

### ● Properly size images — Potential savings of 107 KiB ^

Serve images that are appropriately-sized to save cellular data and improve load time. [Learn more.](#)

Show 3rd-party resources (0)

URL

Resource  
Size

Potential  
Savings

URL	Resource Size	Potential Savings
 ...press/fahnen-more-light.jpg?bc=... (w eb-jenoptik-cd-uat-sc930.sitecore.onw ebhosting.net)	70.5 KiB	52.4 KiB
 ...press/building-...jpg?bc=... (w eb-jenoptik-cd-uat-sc930.sitecore.onw ebhosting.net)	51.1 KiB	38 KiB
 ...4x3/f-theta-l...jpg?bc=... (w eb-jenoptik-cd-uat-sc930.sitecore.onw ebhosting.net)	22.7 KiB	16.8 KiB

● Defer offscreen images ^

Consider lazy-loading offscreen and hidden images after all critical resources have finished loading to lower time to interactive. [Learn more.](#)

● Minify CSS ^

Minifying CSS files can reduce network payload sizes. [Learn more.](#)

● Minify JavaScript ^

Minifying JavaScript files can reduce payload sizes and script parse time. [Learn more.](#)

● Remove unused CSS — Potential savings of 87 KiB ^

Remove dead rules from stylesheets and defer the loading of CSS not used for above-the-fold content to reduce unnecessary bytes consumed by network activity. [Learn more.](#)

Show 3rd-party resources (0)

URL	Transfer Size	Potential Savings
...css/FA788085B...css (w eb-jenoptik-cd-uat-sc930.sitecore.onw ebhosting.net)	106 KiB	86.7 KiB

● Remove unused JavaScript — Potential savings of 191 KiB ^

Remove unused JavaScript to reduce bytes consumed by network activity. [Learn more.](#)

Show 3rd-party resources (1)

URL	Transfer Size	Potential Savings
...js/jeno-html.js?36D12A234FA1F3FA7F8192C38F9E07F8 (w eb-jenoptik-cd-uat-sc930.sitecore.onw ebhosting.net)	269.9 KiB	154.6 KiB
/delivery/cmp_de.min.js (cdn.consentmanager.mgr.consensu.org)	101.3 KiB	36.9 KiB

● Enable text compression — Potential savings of 7 KiB ^

Text-based resources should be served with compression (gzip, deflate or brotli) to minimize total network bytes. [Learn more.](#)

Show 3rd-party resources (1)

URL	Transfer Size	Potential Savings
/delivery/cmp.php?id=... (consentmanager.mgr.consensu.org)	8.8 KiB	7.1 KiB

● Preconnect to required origins ^

**Warnings:** A `<link rel=preconnect>` was found for "https://consentmanager.mgr.consensu.org" but was not used by the browser. Check that you are using the `crossorigin` attribute properly.

Consider adding `preconnect` or `dns-prefetch` resource hints to establish early connections to important third-party origins. [Learn more.](#)

● Initial server response time was short — Root document took 300 ms ^

Keep the server response time for the main document short because all other requests depend on it. [Learn more.](#)

Show 3rd-party resources (0)

URL	Time Spent
https://web-jenoptik-cd-uat-sc930.sitecore.onwebhosting.net	300 ms

● Avoid multiple page redirects ^

Redirects introduce additional delays before the page can be loaded. [Learn more.](#)

● Preload key requests ^

Consider using `<link rel=preload>` to prioritize fetching resources that are currently requested later in page load. [Learn more.](#)

● Use HTTP/2 — 16 requests not served via HTTP/2 ^

HTTP/2 offers many benefits over HTTP/1.1, including binary headers, multiplexing, and server push. [Learn more.](#)

Show 3rd-party resources (0)

URL	Protocol
https://web-jenoptik-cd-uat-sc930.sitecore.onwebhosting.net	http/1.1
...font/FrutigerN....woff2 (w eb-jenoptik-cd-uat-sc930.sitecore.onw ebhosting.net)	http/1.1
...font/FrutigerN....woff2 (w eb-jenoptik-cd-uat-sc930.sitecore.onw ebhosting.net)	http/1.1
...css/FA788085B....css (w eb-jenoptik-cd-uat-sc930.sitecore.onw ebhosting.net)	http/1.1
...slider-1920x700/marken-slider.jpg?h=... (w eb-jenoptik-cd-uat-sc930.sitecore.onw ebhosting.net)	http/1.1
...libs/19B2CDD88....js (w eb-jenoptik-cd-uat-sc930.sitecore.onw ebhosting.net)	http/1.1
...4x3/f-theta-l....jpg?bc=... (w eb-jenoptik-cd-uat-sc930.sitecore.onw ebhosting.net)	http/1.1
...press/building-....jpg?bc=... (w eb-jenoptik-cd-uat-sc930.sitecore.onw ebhosting.net)	http/1.1
...press/fahnen-more-light.jpg?bc=... (w eb-jenoptik-cd-uat-sc930.sitecore.onw ebhosting.net)	http/1.1



URL	Protocol
...js/jeno-html.js?36D12A234FA1F3FA7F8192C38F9E07F8 (w eb-jenoptik-cd-uat-sc930.sitecore.onw ebhosting.net)	http/1.1
...deferred/anchor-link.js?36D12A234FA1F3FA7F8192C38F9E07F8 (w eb-jenoptik-cd-uat-sc930.sitecore.onw ebhosting.net)	http/1.1
...deferred/nav.js?36D12A234FA1F3FA7F8192C38F9E07F8 (w eb-jenoptik-cd-uat-sc930.sitecore.onw ebhosting.net)	http/1.1
...slider-1920x700/karriere.jpg?h=... (w eb-jenoptik-cd-uat-sc930.sitecore.onw ebhosting.net)	http/1.1
...slider-1920x700/bio-world....jpg?h=... (w eb-jenoptik-cd-uat-sc930.sitecore.onw ebhosting.net)	http/1.1
...libs/jquery.anchorlink.js?36D12A234FA1F3FA7F8192C38F9E07F8 (w eb-jenoptik-cd-uat-sc930.sitecore.onw ebhosting.net)	http/1.1
...libs/hoverintent.js?36D12A234FA1F3FA7F8192C38F9E07F8 (w eb-jenoptik-cd-uat-sc930.sitecore.onw ebhosting.net)	http/1.1

● Use video formats for animated content ^

Large GIFs are inefficient for delivering animated content. Consider using MPEG4/WebM videos for animations and PNG/WebP for static images instead of GIF to save network bytes. [Learn more](#)

● Remove duplicate modules in JavaScript bundles ^

Remove large, duplicate JavaScript modules from bundles to reduce unnecessary bytes consumed by network activity.

● Avoid serving legacy JavaScript to modern browsers — Potential savings of 8 KiB ^

Polyfills and transforms enable legacy browsers to use new JavaScript features. However, many aren't necessary for modern browsers. For your bundled JavaScript, adopt a modern script deployment strategy using module/nomodule feature detection to reduce the amount of code shipped to modern browsers, while retaining support for legacy browsers.

[Learn More](#)

Show 3rd-party resources (0)

URL	Potential Savings
...js/jeno-html.js?36D12A234FA1F3FA7F8192C38F9E07F8 (w eb-jenoptik-cd-uat-sc930.sitecore.onw ebhosting.net)	7.8 KiB
jeno-html.js:307	@babel/plugin-transform-classes
jeno-html.js:307	Array.prototype.find
jeno-html.js:359	String.fromCodePoint

● Avoids enormous network payloads — Total size was 2,040 KiB ^

Large network payloads cost users real money and are highly correlated with long load times. [Learn more](#).

Show 3rd-party resources (1)

URL	Transfer Size
...slider-1920x700/karriere.jpg?h=... (w eb-jenoptik-cd-uat-sc930.sitecore.onw ebhosting.net)	487.8 KiB

URL	Transfer Size
...slider-1920x700/bio-world...jpg?h=... (w eb-jenoptik-cd-uat-sc930.sitecore.onw ebhosting.net)	430.1 KiB
...js/jeno-html.js?36D12A234FA1F3FA7F8192C38F9E07F8 (w eb-jenoptik-cd-uat-sc930.sitecore.onw ebhosting.net)	269.9 KiB
...slider-1920x700/marken-slider.jpg?h=... (w eb-jenoptik-cd-uat-sc930.sitecore.onw ebhosting.net)	266.8 KiB
...css/FA788085B....css (w eb-jenoptik-cd-uat-sc930.sitecore.onw ebhosting.net)	106 KiB
/delivery/cmp_de.min.js (cdn.consentmanager.mgr.consensu.org)	101.3 KiB
...press/fahnen-more-light.jpg?bc=... (w eb-jenoptik-cd-uat-sc930.sitecore.onw ebhosting.net)	72.2 KiB
...font/FrutigerN....woff2 (w eb-jenoptik-cd-uat-sc930.sitecore.onw ebhosting.net)	71.8 KiB
...font/FrutigerN....woff2 (w eb-jenoptik-cd-uat-sc930.sitecore.onw ebhosting.net)	63.2 KiB
...press/building-....jpg?bc=... (w eb-jenoptik-cd-uat-sc930.sitecore.onw ebhosting.net)	51.1 KiB

### ● User Timing marks and measures ^

Consider instrumenting your app with the User Timing API to measure your app's real-world performance during key user experiences. [Learn more](#).

### ● JavaScript execution time — 0.2 s ^

Consider reducing the time spent parsing, compiling, and executing JS. You may find delivering smaller JS payloads helps with this. [Learn more](#).

Show 3rd-party resources (0)

URL	Total CPU Time	Script Evaluation	Script Parse
...js/jeno-html.js?36D12A234FA1F3FA7F8192C38F9E07F8 (w eb-jenoptik-cd-uat-sc930.sitecore.onw ebhosting.net)	348 ms	119 ms	10 ms
https://web-jenoptik-cd-uat-sc930.sitecore.onwebhosting.net	183 ms	23 ms	3 ms
Unattributable	57 ms	1 ms	0 ms

### ● Minimizes main-thread work — 0.7 s ^

Consider reducing the time spent parsing, compiling and executing JS. You may find delivering smaller JS payloads helps with this. [Learn more](#)

Category	Time Spent
Script Evaluation	182 ms
Style & Layout	175 ms
Other	173 ms
Rendering	80 ms

Category	Time Spent
Parse HTML & CSS	36 ms
Script Parsing & Compilation	18 ms

- All text remains visible during webfont loads ^

Leverage the font-display CSS feature to ensure text is user-visible while webfonts are loading. [Learn more.](#)

- Minimize third-party usage — **Third-party code blocked the main thread for 0 ms** ^

Third-party code can significantly impact load performance. Limit the number of redundant third-party providers and try to load third-party code after your page has primarily finished loading. [Learn more.](#)

Show 3rd-party resources (0)

Third-Party	Transfer Size	Main-Thread Blocking Time
<a href="#">Adroll</a>	123 KiB	0 ms
/delivery/cmp_de.min.js (cdn.consentmanager.mgr.consensu.org)	101 KiB	0 ms
/delivery/cmp.php?id=... (consentmanager.mgr.consensu.org)	9 KiB	0 ms
Other resources	12 KiB	0 ms

- Avoid large layout shifts ^

These DOM elements contribute most to the CLS of the page.

- Avoids `document.write()` ^

For users on slow connections, external scripts dynamically injected via `document.write()` can delay page load by tens of seconds. [Learn more.](#)

### Runtime Settings

<b>URL</b>	https://web-jenoptik-cd-uat-sc930.sitecore.onwebhosting.net/
<b>Fetch Time</b>	Jul 7, 2021, 5:06 PM GMT+2
<b>Device</b>	Emulated Desktop
<b>Network throttling</b>	40 ms TCP RTT, 10,240 Kbps throughput (Simulated)
<b>CPU throttling</b>	1x slowdown (Simulated)
<b>Channel</b>	devtools
<b>User agent (host)</b>	Mozilla/5.0 (Windows NT 10.0; Win64; x64) AppleWebKit/537.36 (KHTML, like Gecko) Chrome/88.0.4324.96 Safari/537.36

**User agent (network)**

Mozilla/5.0 (Macintosh; Intel Mac OS X 10\_14\_6) AppleWebKit/537.36 (KHTML, like Gecko) Chrome/84.0.4143.7 Safari/537.36 Chrome-Lighthouse

**CPU/Memory Power**

1593

Generated by **Lighthouse** 6.4.0 | [File an issue](#)